

**Work instruction Number 404**

**Page 1 of 4**

**Purpose::** Level 4 maintenance

**Safety:** *Bio Hazard area*

**Instrument:** Starrsed ST

**Revision::** 005, March 2019

---

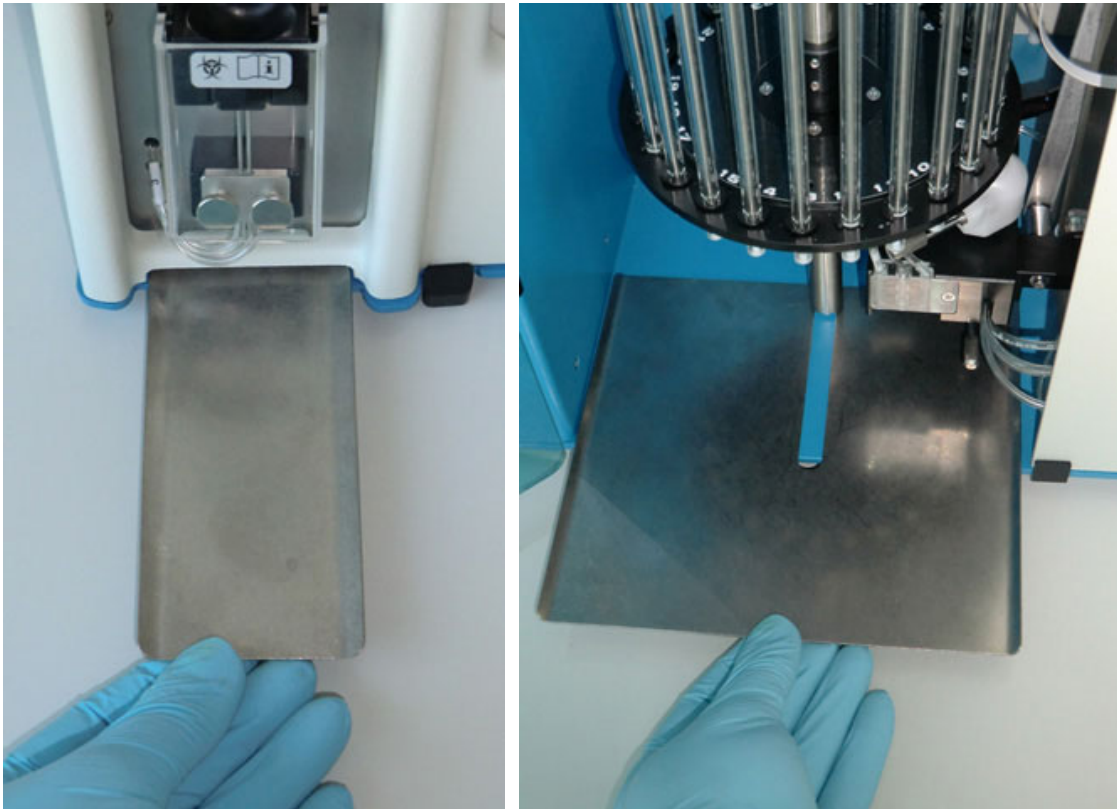
**NOTE:** Chip card type **S** is required !

---

**Prepare disinfectant:** (if not already prepared).

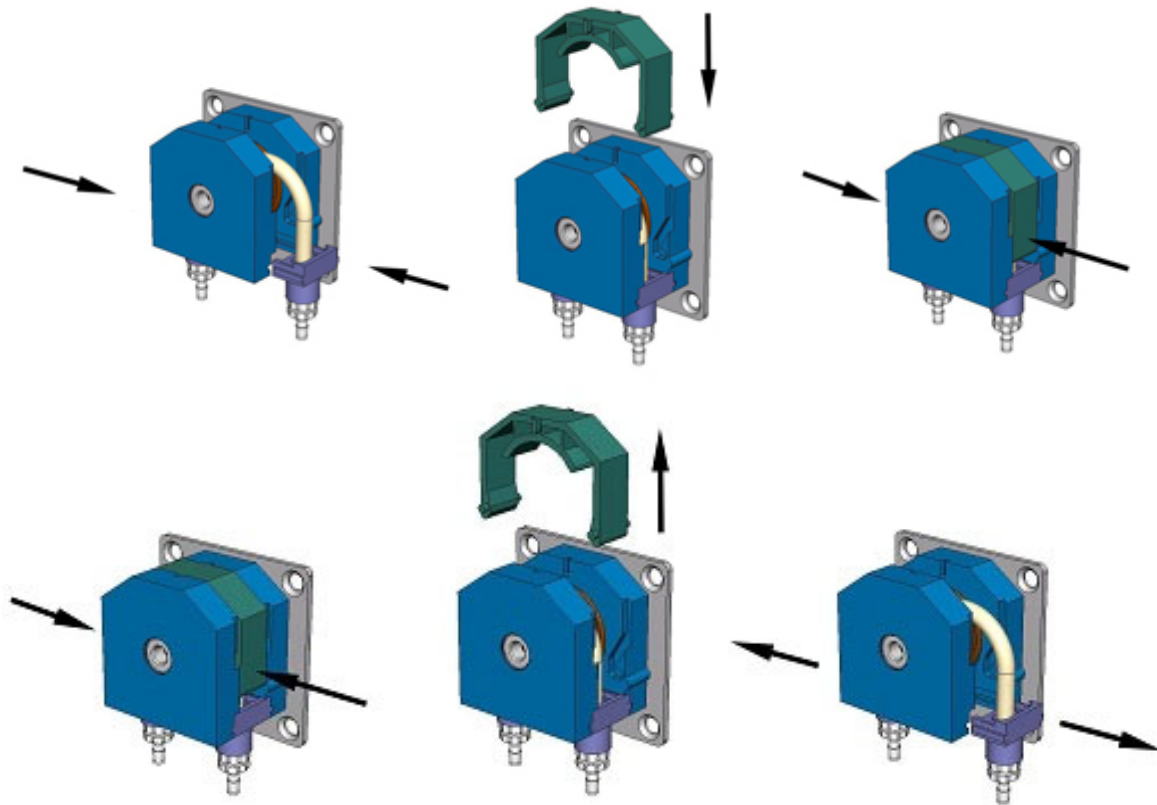
This disinfectant is for cleaning of all external parts that are exposed to blood.

1. Wipe the lower tube holder of the needle unit.
2. Wipe the stainless steel drip plates below the pipette carousel and needle unit.



3. In the Main menu use the function [END\_OF\_DAY WASH] .

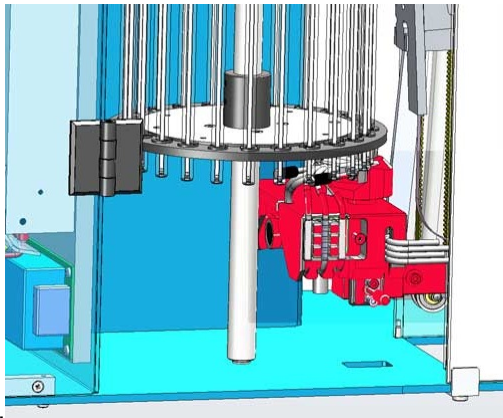
4. Check the system for leakage.
5. Check the waste pump tube condition. Replace the tube if it appears worn or leaking.



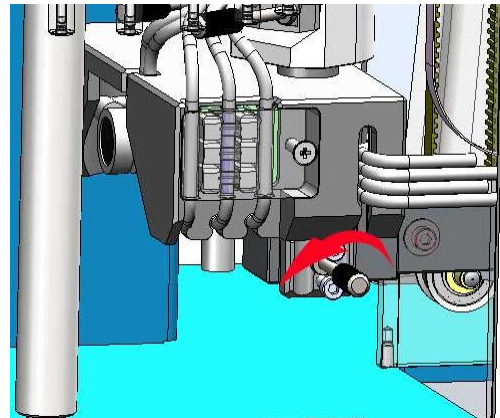
6. Inspect sample needle condition:  
Menu SERVICE - MOTOR CONTROL - NEEDLE M31 Press [ **ARROW DOWN** ] twice to expose the needle tips. If the tips are worn, replace the needle.
7. Check sensors:  
Menu SERVICE - NEXT - SENSOR STATUS  
Blood sensor: value 110-160  
Measure head: value 40-60

## Nozzle O-ring and pipette seal ring replacement

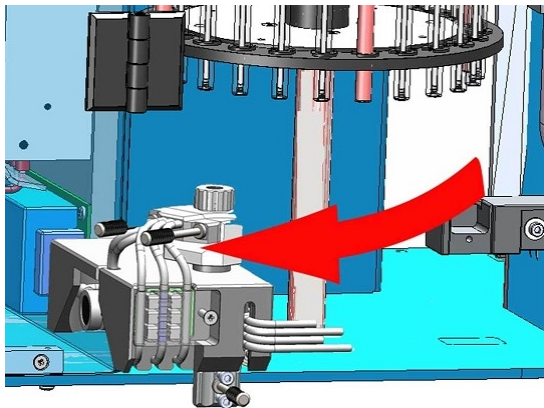
1.



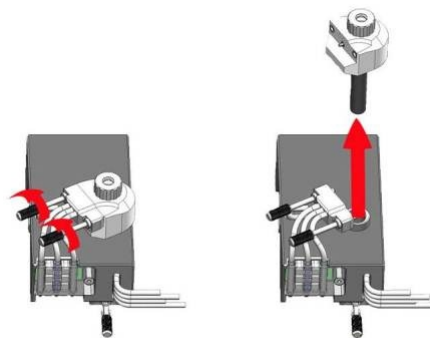
2.



3.



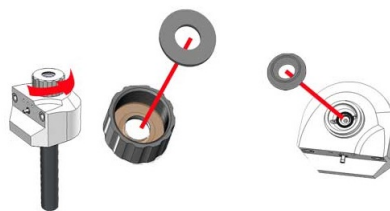
4.



5.



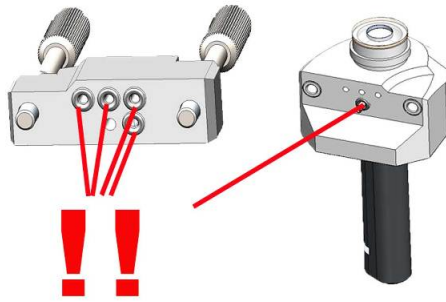
6.



5. Clean Fill nozzle with hot water

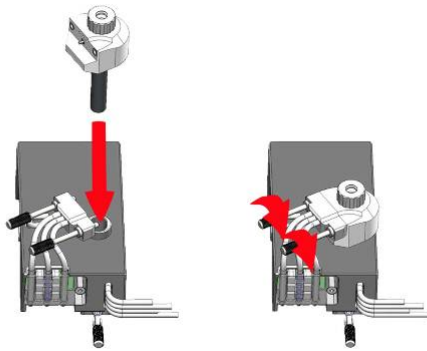
**Note:** Replace the flat pipette seal ring BANG030052 and / or replace the nozzle O-ring QWLV050016

7.

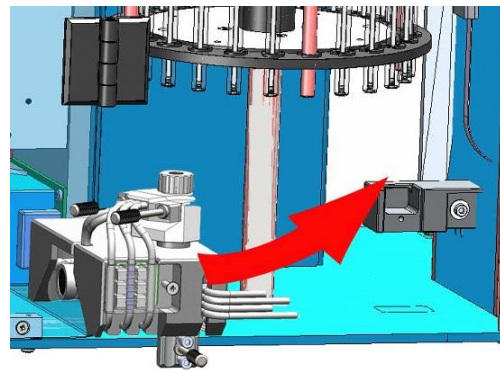


**Note:** Check if all 5 O-rings QWLV050003 are in place and / or if applicable replace the O-rings QWLV050003

8.



9.



10.

