

Work instruction Number 403

Page 1 of 6

Purpose:: Level 3 maintenance

Safety: *Bio Hazard area*

Instrument: Starrsed ST

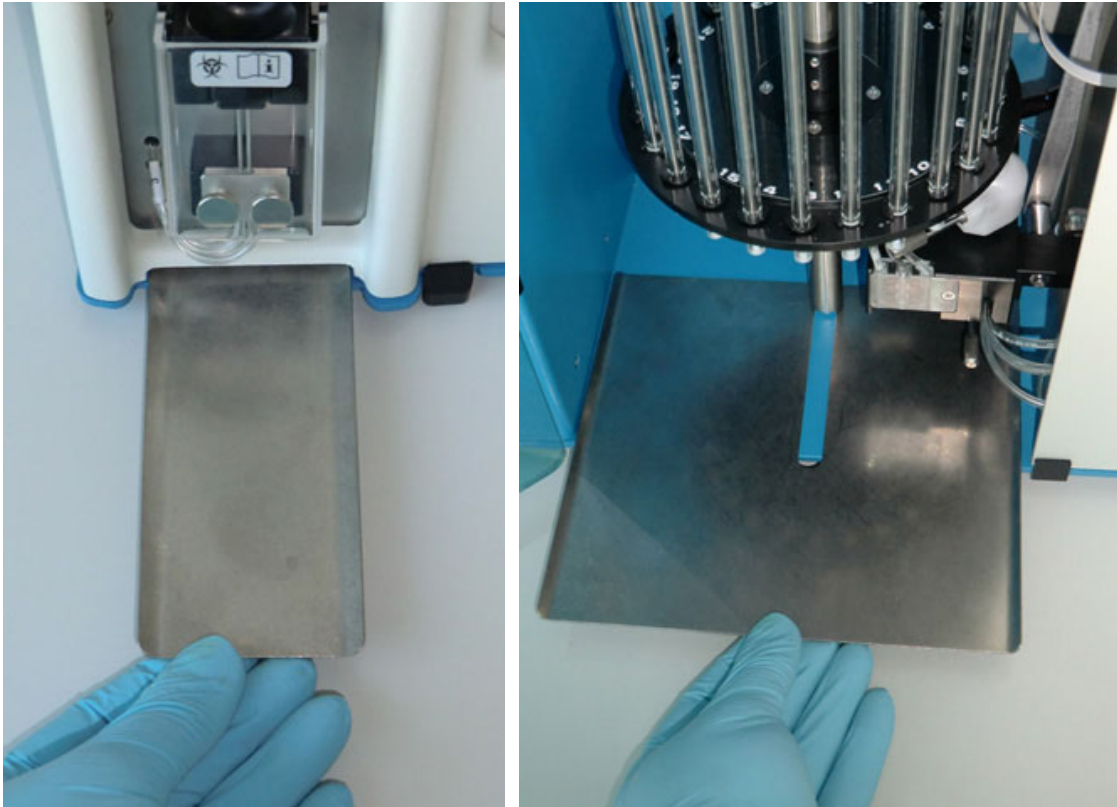
Revision:: 003, 2019

NOTE: Chip card type **S** is required !

Prepare disinfectant: (if not already prepared).

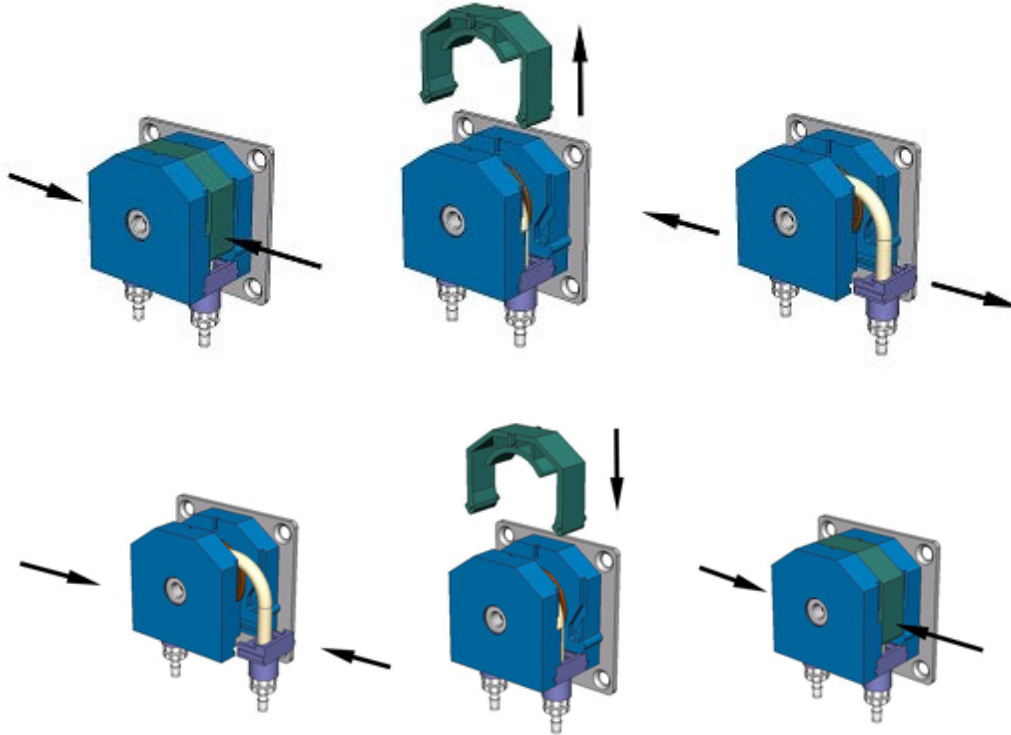
This disinfectant is for cleaning of all external parts that are exposed to blood.

1. Wipe the lower tube holder of the needle unit.
2. Wipe the stainless steel drip plates below the pipette carousel and needle unit.



3. In the Main menu use the function [END_OF_DAY WASH] .

4. Check the system for leakage.
5. Replace waste pump tube.

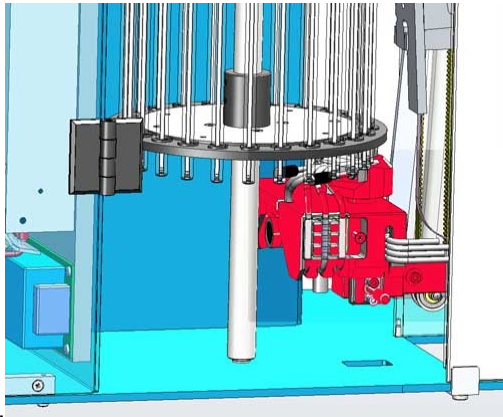


6. Inspect sample needle condition:
Menu SERVICE - MOTOR CONTROL - NEEDLE M31 Press [**ARROW DOWN**] twice to expose the needle tip(s).
If the tip(s) are worn, replace the needle.
7. Check sensors:
Menu SERVICE - NEXT - SENSOR STATUS
Blood sensor: value 110-160
Measure head: value 40-60
8. Replace disk filter
The disk filter QWLV040001 is the filter which can be found on the waste bottle.

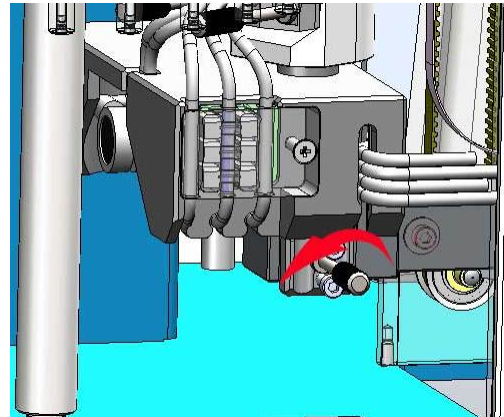


Nozzle O-ring and pipette seal ring replacement

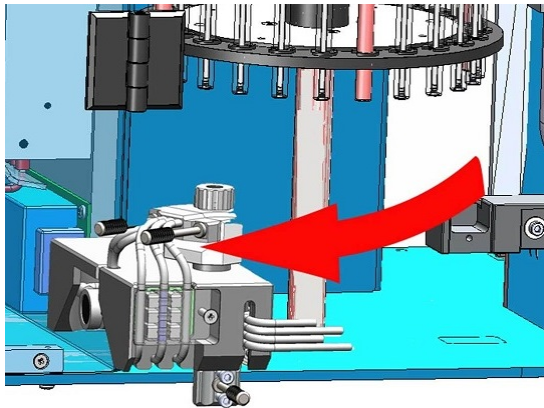
1.



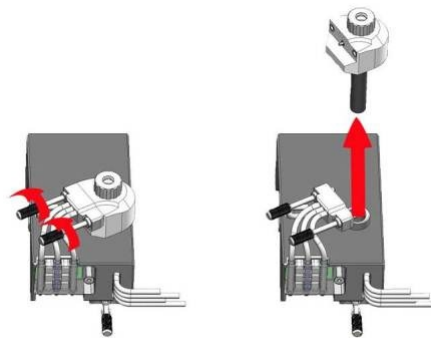
2.



3.



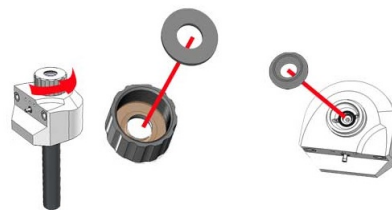
4.



5.



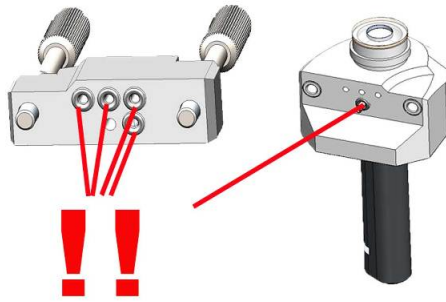
6.



5. Clean Fill nozzle with hot water

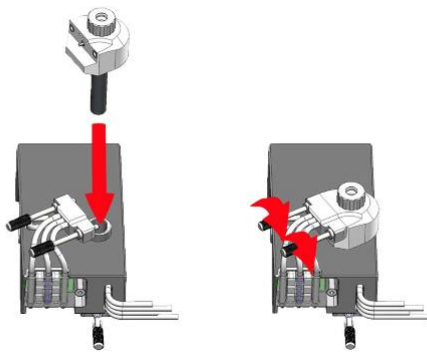
Note: Replace the flat pipette seal ring BANG030052 and / or replace the nozzle O-ring QWLV050016

7.

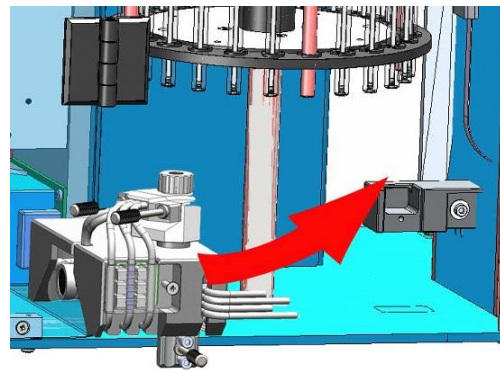


Note: Check if all 5 O-rings QWLV050003 are in place and / or if applicable replace the O-rings QWLV050003

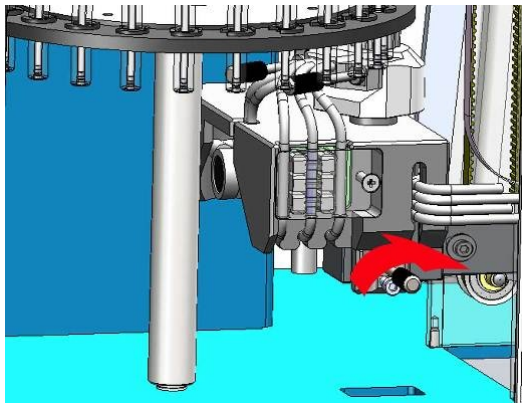
8.



9.



10.



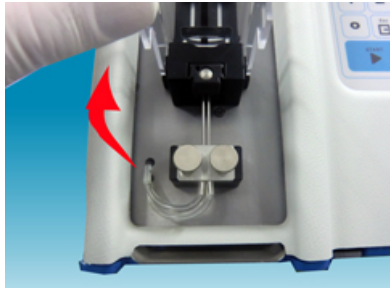
Replace Needle sealing block

(not applicable for single needle version)

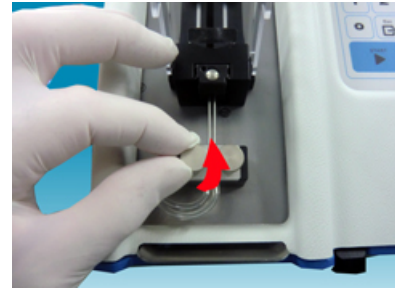


Be aware of sting danger !!

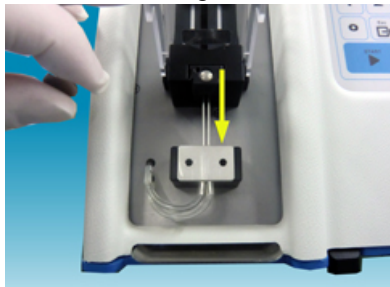
Removal



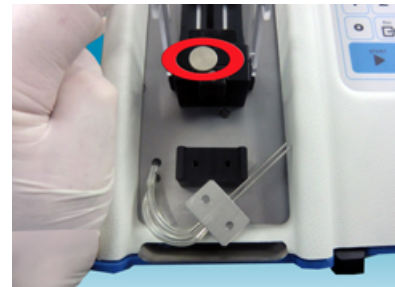
1. Open needle cover to get access to the needle.



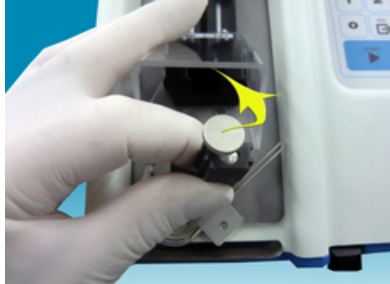
2. Remove both Knurled screws.



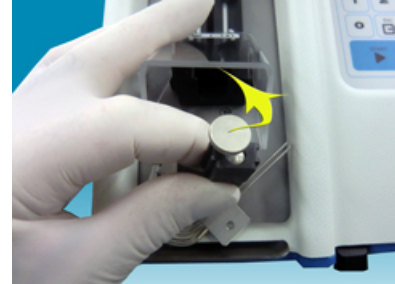
3. Push the needle down (friction possible)



4. Place screw in needle sealing block BANG049002.



5. Pull needle sealing block out the needle guide block assembly.

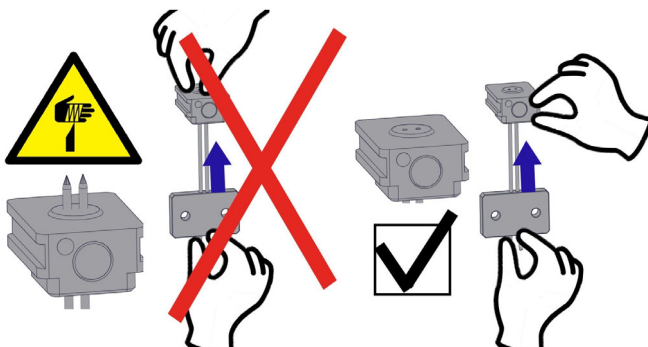


6. Remove screw

In case of replacement of needle: disconnect tubing

Place new Needle sealing block BANG049002.

In case of needle replacement: connect tubes on the needle assembly

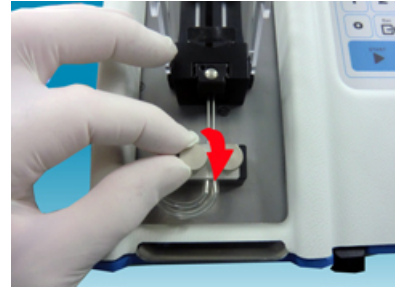


1. Stick the needle in the needle sealing block, the needle not completely through.

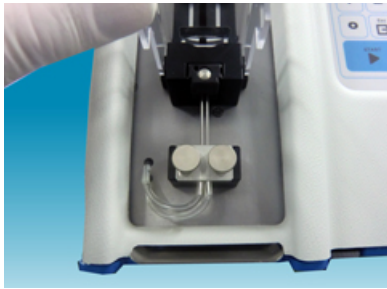

 2. Place the needle sealing block into the needle guide block.
Push the needle back upwards against the friction.



3. Push needle up till it is lined up to the mounting fix position.

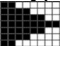
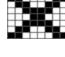


4. Place both Knurled screws



5. Replace Needle cover.

6. After the assembling is finished, the needle need to be set into the correct position in the needle sealing block.

1. Insert an empty sample tube into the needle assembly.
2. Return to the main screen and go to the sample screen, type a number for the patient ID, press  = SAMPLING and press  = CANCEL key which stops the sampling.
3. The needle is now correct located in the needle sealing block.