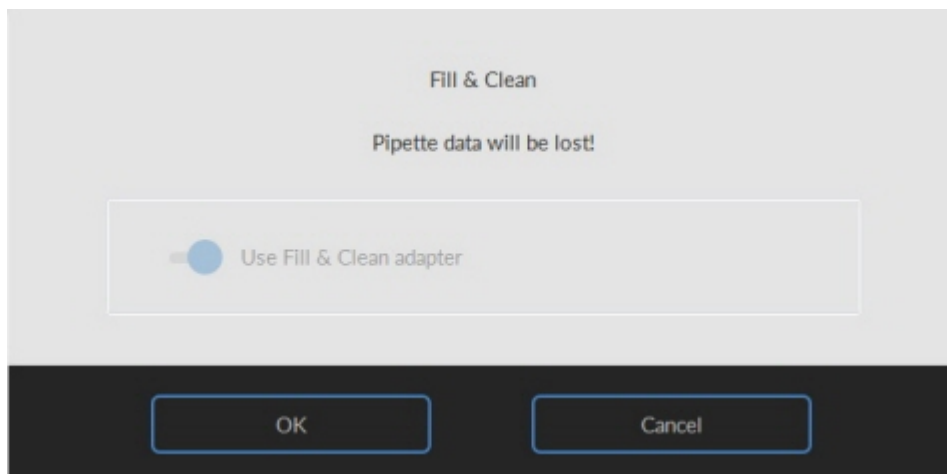


| | |
|---------------------------------------|---|
| Work instruction Number 237 | |
| Page 1 of 2 | Purpose: Fill and Clean with adapter |
| Safety: <i>Bio Hazard area</i> | |
| Instrument: Instrument | Revision: 002, 2020 |

Fill and clean procedure:

1. Fill beaker with hot de-ionized water (± 130 ml, $\pm 80^{\circ}\text{C}$).
2. Add ± 13 ml cleaning agent (QRR 010905) to the hot de-ionized water.
3. Mix the solution well.
4. Fill adapter TLAX110906 with the cleaning solution.
 - Turn adapter upside down and remove red cap (from dummy tube) and start filling the adapter until the dummy sample tube is filled without air.
 - Place red cap on dummy sample tube and turn adapter again, fill the adapter completely. Check for air in the dummy sample tube.
5. Select Instrument on the track management system and put instrument "offline"
6. Ensure that the Instrument is in Service mode, the status is also indicated with orange LED light.
7. Enable "Sample Mode On"
8. Ensure the needle is in "Down" position.
9. Select **Maintenance; Prime/Clean, Fill & Clean**.



10. Select button **OK**. Now the tube disk can be moved freely.
11. Place the adapter with dummy tube on the tube disk. Ensure tubing between adapter and dummy sample tube is below the tube disk.



12. Rotate the tube disk until the dummy sample tube is centered over the needle.
13. Close the hood and press **Continue**.
14. The needle goes up and the fill and clean process is started. (This cycle takes about 90 minutes).
15. When all the pipettes are filled, the needle goes back to the home position.
16. Open the hood and remove the adapter unit.
17. Solve any outstanding errors on the track information system.
18. Close the hood
19. Put the Instrument back online.